

WellBall

Industrial Corp.

ASeries



OEM
Valves



Ball Valve
Accessories



Other Valves

CSeries



About WellBall P01

WellBall
Industrial Corp.

Ball Valve
Accessories

P04

A-Series

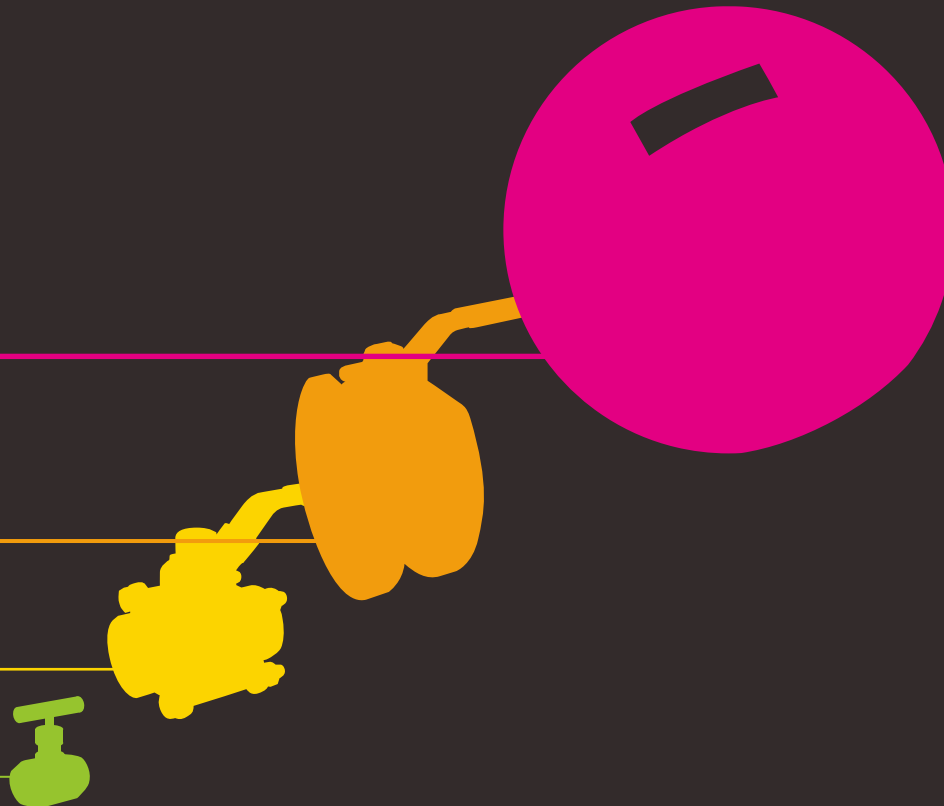
P10

C-Series

P16

Other Valves

P25



WellBall



WellBall is a specialist manufacturer of valves, instrumentation and flow control related products; we provide technical solutions and services thru a worldwide network.

Corporate History

1996 Built a team for valve ball research, development and application. Firstly, we produced two steel plates welding assembling hollow ball.

1998 Succeeded in using hollow steel pipe in the formation of valve ball and solid ball manufacturing. Set up international ball valve division.

2001 Poured additional investment in July 2001 making the capital from USD\$ 1,350,000 to USD\$ 2,850,000. Our first company located in the Youth Lion Industrial Park in Tachia; the main business was to produce ball valves, stainless steel hollow and solid balls for ball valves and also parts for any kind of ball valves.

2002 Enlarged the factory to 7,000 square meters due to rapid growth.

2003 Received the ISO 9001 approval certificate on August.

2004 Purchased new, professional ball valves machines. Through assistance of the Industrial Technology Research Institute, WellBall received recognition from PED and the Metal Industries Research & Development Center.

2009 Opened new production facility in the Central Taiwan Science Park, Taichung.



Work Chart

- Customer Request -> Design -> Sample-making -> Testing -> Approval -> Pilot Run -> Mass Production
- Make WellBall your problem-solver, solution-provider and your best partner!
- One-Stop Shop; ODM and OEM services are absolutely welcome!

Certificates

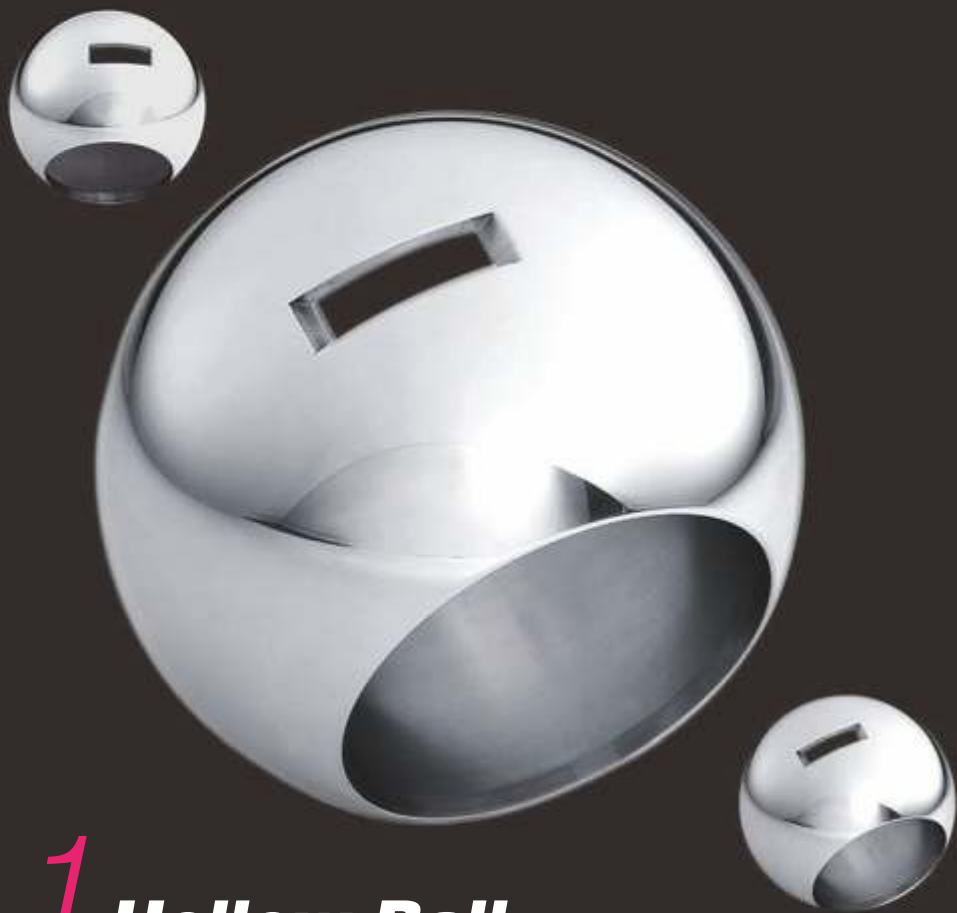


WellBall
Well Done !

Accessories

*Ball valve accessory is to valves
as air is to mankind!*

WellBall manufactures and supplies stainless steel ball. Our main products are hollow, solid and spherical balls, made from such materials as SUS304, SUS316, CF8M, CF8, 1.4301, 1.4408, BRASS...etc. by investment casting, sand casting, and centrifugal casting. If you are interested in our stainless steel balls, please contact us online.



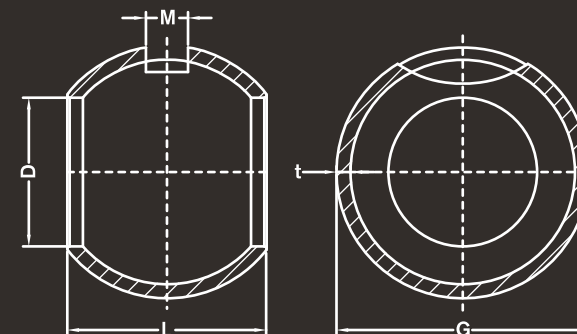
1 Hollow Ball

Item NO.	Dia.Size	G \pm 0.1	D \pm 0.1	L \pm 0.1	T \pm 0.1	M \pm 0.1	Roundness
HC99020	3/4"	34	20	26.1	2.0	6	0.05
HC99025	1"	40	24	30.5	2.0	6	0.05
HC99032	1-1/4"	52	31	39.8	2.5	8	0.05
HC99040	1-1/2"	64	39	48.8	2.5	8	0.05
HC99050	2"	80	50	60.1	2.5	10	0.05
HC99065	2-1/2"	102	63	78	3.5	12	0.05
HC99080	3"	125	78	95	4.0	12	0.05
HC99100	4"	154	98	116	5.0	12	0.08
HC99125	5"	192	122	144.8	6.0	18	0.08
HC99150	6"	230	150	171	6.0	20	0.08
HC99200	8"	300	200	220	8.0	20	0.10
HC99250	10"	370	250	270	10.0	30	0.10

Model	Description	Size Range	Material(s)
HC	Tube	Over 3/4"	SUS 304, SUS 316, C276

Advantages of Hollow Balls

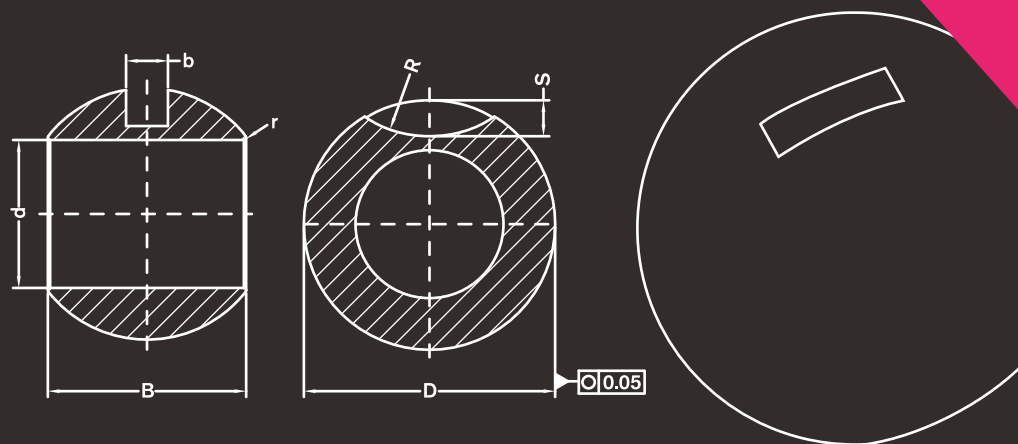
- Quality guaranteed – 100% no leakages, cracks and holes.
- Lightness – 50% ~ 70% lighter than solid balls.
- Stable material – Higher resistance to acid and alkali.
- Torque reduced by 20% ~ 40% - less malfunctions and breakdowns of actuators in long term usage.



Item NO.	Nominal	Dia.Size	D	B	b	s	d	R	r
SA98012	1/2"	12	25.5	19.3	5	4	15	12.5	0.8
SA98020	3/4"	20	34	26	5	5.5	20	17	0.8
SA98025	1"	25	42.5	32.8	8	6	25	25	0.8
SA98032	1-1/4"	32	54	41.8	9.6	8	31.8	25	0.9
SA98040	1-1/2"	40	62	47	9.6	9	38.1	25	0.9
SA98050	2"	50	80	60	10	10	50	37.5	1.0
SA98065	2-1/2"	64	103	78.8	12	12	64	37.5	1.0
SA98065	3"	80	125	95	12	12	78	37.5	1.3
SA98100	4"	100	154	115	14	12	100	37.5	1.5
SA98125	5"	125	195	149	20	18	125	50	1.7
SA98150	6"	150	230	173/170	20	18	150	50	1.7
SA98200	8"	200	300	222	20	22	200	62.5	2.0
SA98250	10"	250	370	269	35	30	250	75	2.3

2 Solid Ball

Model	SA
Description	Casting
Size Range	1/2" thru 16"
Material(s)	SUS 304, SUS 316, CF8M, CF8, 1.4301, 1.4408, A105, Alloy 20, F22, F51, Inconel 625, 718 ... etc. By sand casting, Investment casting and Centrifugal casting.





WellBall

We make Balls !

Specialty spherical products

OEM or ODM for Specialty designed Balls, such as V-port, E-port, stem ball...etc. We offer OEM&ODM services for a wide range of balls.

*We accept all customers' OEM and ODM ball requests!
Contact us for details.*

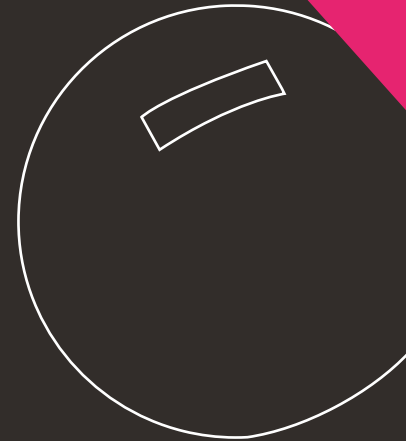
3 Spherical Ball

Description	Special designed balls – Solid Ball and Hollow Ball
Size Range	All Sizes
Material(s)	SUS 304, SUS 316, CF8M, CF8, 1.4301, 1.4408...etc.

4 Casting



5 Stems



6 Fittings



7 OEM Valves



WellBall

*We are your Genie ;
your wish is our command !*

A-Series

1, 2 and 3 PC Ball Valves and Three-Way Flanged End With Mounting Pad

1, 2 and 3 PC ball valves are available in Wafer Flanged End, Flanged End and Flanged End With Direct Mounting Pad





A110 Series

1-PC Wafer Flanged End

Model	Pressure Rating
A111	PN16, PN40

Size Range	1/2" thru 6" Full Port
Construction	Investment Casting
Material(s)	CF8M / CF8 / WCB
Mounting Pad	ISO 5211



A200 Series **2-PC Flanged End**

Model	Pressure Rating
A201	150 LBS
A202	300 LBS
A203	JIS 10K
A204	JIS 20K
A205	PN 10/16 F1
A206	PN 10/16 F4
A207	PN 25/40 F1
A208	PN 25/40 F4

Size Range	1/2" thru 4" Full Port
Construction	Investment Casting
Material(s)	CF8M / CF8 / WCB
Mounting Pad	ISO 5211





A300 Series

3-PC Flanged End

Model	Pressure Rating
A305	PN 10/16 F1
A306	PN 10/16 F4
A307	PN 25/40 F1
A308	PN 25/40 F4

Size Range	1/2" thru 4" Full Port
Construction	Investment Casting
Material(s)	CF8M / CF8 / WCB



A320 Series

**3-PC Flanged End With
Direct Mounting Pad**

Model	Pressure Rating
A325	PN 10/16 F1
A326	PN 10/16 F4
A327	PN 25/40 F1
A328	PN 25/40 F4

Size Range	1/2" thru 4" Full Port
Construction	Investment Casting
Material(s)	CF8M / CF8 / WCB
Mounting Pad	ISO 5211





A330 Series

Three-Way Flanged End With Mounting Pad

<i>Model</i>	<i>Pressure Rating</i>
A331	150 LBS
A332	300 LBS
A333	PN 10/16 F1
A335	PN 10/16 F4

Size Range	1/2" thru 4" Full Port
Construction	Investment Casting
Material(s)	CF8M / CF8 / WCB
Port	L Port or T Port
Mounting Pad	ISO 5211

C-Series

*Threaded End Ball Valves including;
Spring Return, Three-Way, 3-PC and
Mounting Pad*

C350 series is Sanitary Ball Valve with T-Clamp End
(C-series all available in Butt Weld End
and Socket Weld End)





C101



C102B

C100 Series

1-PC Threaded End

Model	Description
C101	1000PSI
C102B	2000PSI Hex. Body

Size Range	1/4" thru 2" Reduced Port
Construction	C101 / Investment Casting C102B / Bar Stock, Investment Casting
Material(s)	CF8M / CF8 / WCB SS316 / SS304 / Carbon Steel
Thread	BSP, NPT, DIN



C200 Series

2-PC Threaded End

Model	Description
C201	1000 PSI
C202	1000 PSI
C204	2000 PSI Reduced Port

Size Range	1/4" thru 4" Full Port
Construction	Investment Casting
Material(s)	CF8M / CF8 / WCB
Thread	BSP, NPT, DIN
Option	Oval Handle, Butterfly Handle





C204 Series

2-PC Spring Return Threaded End

<i>Model</i>	<i>Description</i>
C204F	2000 PSI

Size Range	1/4" thru 4" Full Port
Construction	Investment Casting
Material(s)	CF8M / CF8 / WCB
Thread	BSP, NPT, DIN



C270 Series

Three-Way Threaded End

Model	Description
C271	1000 PSI – T Port
C272	1000 PSI – L port

Size Range	1/4" thru 2" Reduced Port
Construction	Investment Casting
Material(s)	CF8M / CF8 / WCB
Thread	BSP, NPT, DIN
Mounting Pad	ISO 5211



C300 Series

3-PC Ball Valve



Model	Description
C301	Threaded End
C302	Butt Weld End
C303	Socket Weld End
C304	Extended Butt Weld End

Size Range	1/4" thru 4" Full Port 1000 PSI
Construction	Investment Casting
Material(s)	CF8M / CF8 / WCB
Thread	BSP, NPT, DIN



C310 Series

3-PC Ball Valves with Mounting Pad

Model	Description
C311	Threaded End
C312	Butt Weld End
C313	Socket Weld End
C314	Extended Butt Weld End

Size Range	1/4" thru 4" Full Port 1000 PSI
Construction	Investment Casting
Material(s)	CF8M / CF8 / WCB
Thread	BSP, NPT, DIN
Mounting Pad	ISO 5211



C320 Series

3-PC Ball Valves with Direct Mounting Pad



Model	Description
C321	Threaded End
C322	Butt Weld End
C323	Socket Weld End
C324	Extended Butt Weld End

Size Range	1/4" thru 4" Full Port 1000 PSI
Construction	Investment Casting
Material(s)	CF8M / CF8 / WCB
Thread	BSP, NPT, DIN
Mounting Pad	ISO 5211



C351



C352

C350 Series

**3-PC Sanitary Ball Valves
for Food and General
Chemical Service**

Model	Description
C351	T-Clamp End
C352	Butt Weld End

Size Range	1/2" thru 4" Full Port 1000 PSI
Construction	Investment Casting
Material(s)	CF8M / CF8 / WCB
Mounting Pad	ISO 5211





Other Valves

WellBall also provides a variety of valves

Please see "Other Valves" .



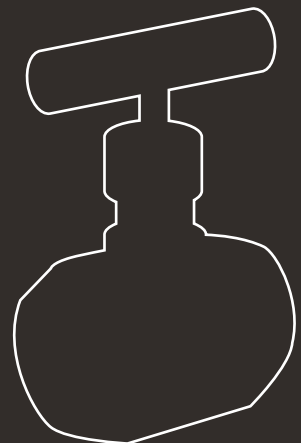
T205

2-PC High Pressure Ball Valve

Model	Pressure Rating
T205	6000PSI

1 High Pressure Ball Valve

Size Range	1/4" thru 2" Full Port / Standard Port
Construction	Investment Casting
Material(s)	CF8M / CF8 / WCB
End Connection	Threaded End





T315

3-PC High Pressure Ball Valve

Model	Pressure Rating
T315	6000PSI

1 High Pressure Ball Valve

Size Range	1/2" thru 2" Full Port
Construction	Bar Stock
Material(s)	F304, F316, F316L
End Connection(s)	Thread End, Socket Weld End



D201

2-PC Instrument Ball Valve

Model	Pressure Rating
D201	1000PSI

2 Instrument Ball Valves

Size Range	1/4" thru 1/2"
Construction	Bar Stock
Material(s)	SS316, Brass, Monel, Hastolly C276
End Connection	Tube End





D301

3-PC Instrument Ball Valve

Model	Pressure Rating
D301	3000 PSI – PTFE / 6000 PSI - PEEK

2 Instrument Ball Valves

Size Range	1/8" thru 3/4"
Construction	Bar Stock
Material(s)	SS316, Brass, Monel, Hastolly C276
End Connection	Tube End



D302

3-PC Instrument Ball Valve

Model	Pressure Rating
D302	1000 PSI

2 Instrument Ball Valves

Size Range	1/4" thru 3/4"
Construction	Bar Stock
Material(s)	SS316, Brass, Monel, Hastolly C276
End Connection	Tube End



E101



Model	E101
Description	Globe Valve
End Connection(s)	BSP, NPT, DIN
Pressure Rating	200 LBS
Size Range	1/4" thru 2"
Construction	Investment Casting
Body Material	CF8M

E102



Model	E102
Description	Globe Valve
End Connection(s)	BSP, NPT, DIN
Pressure Rating	200 LBS
Size Range	1/2" thru 2"
Construction	Investment Casting
Body Material	CF8M



E105

Model	E105
Description	Y-Type Spring Check Valve
End Connection(s)	BSP, NPT, DIN
Pressure Rating	800 PSI
Size Range	1/4" thru 2"
Construction	Investment Casting
Body Material	CF8M



E108

Model	E108
Description	Y-Type Spring Check Valve
End Connection(s)	BSP, NPT, DIN
Pressure Rating	800 PSI
Size Range	1/2" thru 2"
Construction	Investment Casting
Body Material	CF8M





E110

Model	E110
Description	Needle Valve
End Connection(s)	BSP, NPT, DIN
Pressure Rating	6000 PSI
Size Range	1/8" thru 2"
Construction	Investment Casting / Bar Stock
Body Material(S)	CF8M , SS316



E110T

Model	E110T
Description	Needle Valve
End Connection(s)	BSP, NPT, DIN
Pressure Rating	10000 PSI
Size Range	1/8" thru 2"
Construction	Investment Casting / Bar Stock
Body Material(S)	CF8M, SS316





WellBall

Industrial Corp.



No. 50 Keya E. Rd., Central Taiwan Science Park, Daya Dist., Taichung City 428, Taiwan, R.O.C.

Tel : 886-4-2565 8599

Fax: 886-4-2565-8790

Website : www.wellball.com.tw

Email : sales@wellball.com.tw